

Datasheet Kerio Connect

IN THE OFFICE. ON THE ROAD. AT HOME.

Get Five in One

Cross-platform collaboration	Manage email, access global contacts and schedule meetings in Outlook, Entourage, iCal, web mail and smartphones.
Wireless mobile synchronization	Synchronize with any smartphone over the air. Delete sensitive data on lost or stolen devices.
Robust email security	Stop unwanted emails with over 14 anti-spam techniques and dual anti-virus protection.
Email archiving	Maintain compliance and minimize liabilities.
Automated backup	Backup and restore data without server downtime.

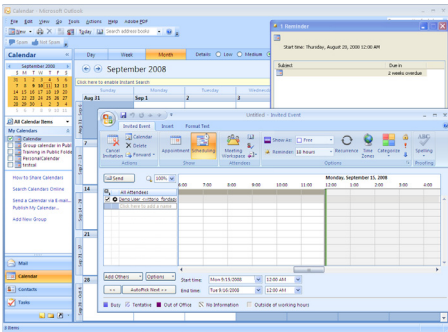


CROSS-PLATFORM COLLABORATION

Email, Calendar and Contacts – Anytime, Anywhere

Windows savvy

Manage email and calendars with Microsoft Outlook or Windows Vista Mail and Calendar applications.



Kerio WebMail

- Access full groupware features with Internet Explorer, Safari, and Firefox.
- Use Kerio WebMail as a full-featured groupware alternative to desktop applications.

Access from the desktop, the web, or mobile device

	Email	Contacts	Calendar	Tasks	Notes	Shared/Public folders
Outlook	✓	✓	✓	✓	✓	✓
Entourage	✓	✓	✓	—	—	✓
Kerio WebMail	✓	✓	✓	✓	✓	✓
Smartphone	✓	✓	✓	✓	—	—

Mac friendly

- Kerio Connect is the only Exchange alternative with full and native groupware support for Microsoft Entourage.
- Sync natively with Apple iCal through CalDAV and CardDAV.
- Manage personal and global contacts with Apple Address Book via CardDAV.

Global Address List

Provides an easy way to access and view contact information of everyone in the corporate directory from many groupware clients.



WIRELESS MOBILE SYNCHRONIZATION

Increase field productivity

- Push email, calendars, contacts and tasks to mobile workers. Respond to email and meeting invitations while on the go.
- Sync wirelessly with Apple iPhone, Windows Mobile, Treo Palm, BlackBerry, and Symbian devices that use Mail for Exchange or DataViz's RoadSync client.
- Delete email, calendar and contacts remotely with Kerio Smart Wipe in the event your phone is lost or stolen.



Testimonials

"Exceeding our client's expectations requires almost immediate response time to changes - from project deadlines to creative revisions... Kerio Connect keeps us in constant sync."
— *Michael Borosky*
Creative Director,
Eleven

"Joining iCal and Mail, Address Book in Snow Leopard now ties very neatly to Kerio Connect with the addition of the new CardDAV server. My clients are thrilled to have bidirectional syncing in real time between Kerio and all of their favorite authorized software."
— *Brandon Carter Meixel*
Mission Engineer,
Rocket Science Consulting

"The nice thing about Kerio Connect is that with all the protocols it can speak, it can handle E-mail, calendaring, and resource scheduling for your whole company, no matter what platform or device and employee needs or wants to use."
— *Kevin Anderson*
President and CEO,
Computer Stores Northwest Inc.



ROBUST EMAIL SECURITY

Block Unwanted Emails with the Power of an Email Security Appliance

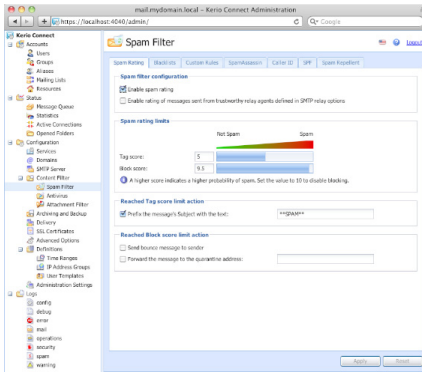
Anti-spam protection

Block up to 98% of spam with over 14 anti-spam layers

- Directory Harvest Attack protection.
- Anti-phishing / anti-spoofing.
- Real-time blacklist server.
- Custom whitelists and blacklists.
- SpamAssassin (Bayes, Heuristic, and SURBL).
- SMTP restrictions and more.

Conserve server resources

- Block up to 80% of spam before it even reaches the server. This reduces the amount of emails that needs to be filtered and stored on disk.



Anti-virus protection

- Filter viruses, worms, Trojans and spyware from incoming, outgoing and relayed emails.
- Simplify deployment with integrated McAfee engine.
- Ready-to-use plugins for other anti-virus engines (ClamAV, AVG, NOD32, Sophos and Avast).
- Combine McAfee with a second anti-virus engine for double the protection.



EMAIL ARCHIVING

Archiving for compliance or governance

- Archive local, incoming, outgoing and relayed emails.
- View, search and sort through archives for legal discovery or audits.



AUTOMATED BACKUP

Easy backup and restoration

- Schedule full or differential backups without having to be present during the backup.
- Run backups without having to stop the mail server.
- Restore user data and server configurations onto another server.
- Recover emptied deleted items for a single user with just a few clicks.

EASE OF ADMINISTRATION

Distributed Domain

- Manage a single email domain across multiple servers in different geographic locations.

Just set it and forget it

- Ideal for organizations with little or no IT resources.
- Install all components with one installer.
- Install in minutes.
- Administer all components through one highly intuitive interface. Easy to find settings.
- Full featured Web Administration
- Administer remotely through secured channels.
- Self-contained services - no dependencies on other services such as SMTP, POP, IMAP, LDAP, and HTTP.
- Virtual appliance installation option for faster restoration and deployment.

ABOUT KERIO

Innovating in Internet security since 1997, Kerio Technologies, Inc. provides Internet messaging and firewall software that is simple, stable, and secure.

Kerio is headquartered in San Jose, California, and has offices in New York, United Kingdom, Germany, Czech Republic and Russia. Kerio is a member of CalConnect, a premier member of the Apple Developer Connection and a Microsoft Gold Partner.

Server Requirements

Windows

1 GHz
512 MB RAM
Windows 2000/XP/2003/Vista/2008/7

Linux

1 GHz
512 MB RAM
Red Hat Enterprise Linux 4/5
CentOS 5.2
SUSE/openSUSE 10/11
Debian 5.0
Ubuntu 8.04 LTS

Mac OS X

PowerPC G4 or G5
Intel Core
512 MB RAM
Mac OS X 10.4/10.5/10.6

Virtual Appliance

VMware Server
VMware Player
VMware ESX

Client Requirements

Windows

Outlook 2000/XP/2003/2007
Windows Mail (Vista)
Windows Calendar (Vista)

Mac OS X

Entourage 2004/ 2008
Apple Mail
Apple iCal
Apple Address Book

Web browser

Internet Explorer 6/7/8
Firefox 2/3
Safari 3/4

Certifications



© 2010 Kerio Technologies, Inc. All rights reserved. The names of actual companies and products mentioned herein may be the trademarks of their respective owners.
Published 02/2010