



## SonicWALL Continuous Data Protection (CDP) Series

BACKUP AND RECOVERY

Automatic Backup and User-directed Restore and Flexible Disaster Recovery

- Automatic, transparent backup
- User-directed restore
- Low-touch administration
- Flexible disaster recovery
- Enforced policy-based backup
- Instant data recovery and file versions
- Remote management
- VSS Snapshot Service
- Robust management and reporting
- Granular bandwidth controls

Any backup is only as reliable as its ability to restore business data and applications when they are needed most. Small and medium-sized businesses (SMBs) need to protect not only their data, but also the systems that access that data, such as Exchange, SQL Server and Active Directory. SMBs also need the performance to backup and restore rapidly expanding volumes of data, while meeting stricter regulatory compliance for data archiving. And should disaster strike, SMBs need the flexibility to immediately recover the most current data to new locations or computer platforms.

SonicWALL® Continuous Data Protection (CDP) offers the only complete end-to-end disk-based backup and recovery solution for SMBs. CDP features automatic transparent backup, user-directed restore, flexible disaster recovery options and low-touch administration. CDP ensures performance and reliability by generating automatic e-mail alerts of compromised connectivity, as well as daily hierarchical and detailed drill-down reports that summarize all backup jobs, capacity and utilization statistics. Extensible across multiple platforms including Windows and Linux®, CDP solutions can instantly recover data, applications or entire workstation or server systems onto original, new or virtual devices. CDP solutions secure data using industry-standard encryption anytime it is transmitted off site, offering complete business information availability for servers, desktops and mobile laptops.

### Features and Benefits

**Automatic, transparent backup** ensures that data, applications and systems are reliably protected from common user error, hardware failure, deletion, potential disaster and malicious attack. Integrated scheduling offers administrator controls to perform backups continuously in real time or automatically on a routine basis for both files and database data set. CDP integrated scheduling performs daily, weekly, bi-weekly or monthly backup at a specific desired time for optimize backup operation and network resource utilization.

**User-directed restore** increases user satisfaction and productivity while freeing IT resources.

**Low-touch administration** features automation of tedious backup administrative tasks, including seamless automatic software updates with no administrator intervention required.

**Flexible disaster recovery** options provided are for Offsite Data Backup, Site-to-Site Data Backup and Local Archiving, as well as Bare Metal Recovery of complete systems—OS, files, applications, databases and settings—in just minutes.

**Enforced policy-based backup** provides the peace of mind that comes with being in control of all business-critical data, while avoiding the increased costs of backing up non-business related files such as personal music, videos and pictures. Administrators can easily preconfigure set policies to ensure that specific business-critical files, folders or applications are backed up, and to assign end-users rights to allow them to retrieve their own data.

**Instant data recovery and file versions** ensures that all files are instantly and continually available in multiple historic versions, and also that all servers and their

applications—including Exchange, SQL Server and Active Directory—are protected with multiple-point-in-time recovery in case of disaster. CDP version catalogs minimize downtime by enabling easy, instant, pick-and-click data recovery of files and even individual Exchange Mailboxes.

**Remote management** enables administrators to log in to Enterprise Manager on a CDP appliance from any remote location to manage policy and settings, view statistics, and pre-set backup of files, folders or applications, resulting in more flexible disaster recovery and increased service levels.

**VSS Snapshot Service** safely enables CDP to freeze large and frequently changing files to be backed up from the snapshot thus preventing the aborted transfers that occur when a file is written to while it is being backed up. This ensures files are reliably backed up every time.

**Robust management and reporting** enables administrators to flexibly manage policy and settings, view statistics and analytical reports, enable or disable specific general alerts, and pre-set backup of files, folders or applications. Administrators can administer multiple CDP appliances using SonicWALL Global Management System (GMS), or remotely log in to manage a CDP appliance directly from any location.

**Granular bandwidth controls** enable administrators to set maximum allowable concurrent threads for optimal backup performance, or throttle bandwidth available to CDP to open throughput to other mission-critical applications during peak business hours.



### Flexible Options for Disaster Recovery

CDP offers multiple backup and recovery options enabling organizations to be up and running quickly after a disaster event.

- **Offsite:** The SonicWALL CDP Offsite Data Backup Service automatically transmits and stores data using AES 256-bit encryption to a secure data center. In the event the local CDP appliance is no longer viable, IT Administrators can easily recover the latest version of data through the CDP Offsite Web Portal.
- **Site-to-Site:** SonicWALL CDP Site-to-Site Backup automatically transmits and stores data using secure AES 256-bit encryption to another CDP appliance at a remote site. In the event the local CDP appliance is no longer viable, IT Administrators can easily recover the latest version of data through an easy-to-use interface.
- **Bare Metal Recovery (BMR) with Universal Restore:** SonicWALL BMR software creates an exact image of an entire server or workstation including the operating system files, programs, databases and settings. BMR's wizard-driven interface enables IT administrators to easily recover an entire system to dissimilar physical or virtual hardware regardless of make, model or installed components, from within minutes to hours.
- **Local Archiving:** SonicWALL CDP's Local Archiving capability allows IT to store the latest version of business-critical data to a USB drive. Designed to help SMBs meet regulatory compliance, Local Archiving enables administrators to explore archives and restore individual files.

### Complete End-to-end Backup and Recovery to Meet Every SMB Need

The SonicWALL CDP Series provides a flexible, extensible solution that can scale to meet the budget, performance and capacity needs of any SMB.

- The **SonicWALL® Continuous Data Protection (CDP) 110** is ideal for smaller distributed environments and remote or branch offices requiring automatic, transparent, disk-based backup and flexible disaster recovery for multiple workstations and servers with a capacity of up to 900 GB (at standard 2:1 compression ratios), featuring user-directed restore and low-touch administration

- The **SonicWALL® Continuous Data Protection (CDP) 210** is ideal for small distributed environments and remote or branch offices requiring automatic, transparent, disk-based backup and flexible disaster recovery for multiple workstations and servers with a capacity of up to 2 TB (at standard 2:1 compression ratios), featuring user-directed restore and low-touch administration.
- The **SonicWALL® Continuous Data Protection (CDP) 5040** is ideal for small-to-medium size organizations demanding high performance and capacity. The CDP 5040 offers automatic disk-based backup and recovery for multiple workstations and server applications, capacity of up to 4.2 TB (at standard 2:1 compression ratios), flexible disaster recovery options, RAID 5 and replaceable drives.
- The **SonicWALL® Continuous Data Protection (CDP) 6080** is ideal for medium size organizations demanding higher performance and capacity, offering automatic disk-based backup and recovery for multiple workstations and server applications, capacity extensible from 4.2-9 TB (at 2:1 compression), flexible disaster recovery options, RAID 5, and replaceable drives and power supplies.

### Key Components

The key components of the SonicWALL CDP solution are the SonicWALL CDP appliance, the Enterprise Manager and the Agent Tool.

- **SonicWALL CDP Appliance:** This dedicated disk-based backup appliance enables all CDP features and functions, including storage, file and application versioning, and offsite transmission and encryption. The SonicWALL CDP appliance can be configured and administered locally or via the Enterprise Manager.
- **Enterprise Manager:** The SonicWALL CDP Enterprise Manager monitors system activity and provides file-level visibility into all clients that are active on the CDP appliance. From a remote location, administrators can use Enterprise Manager in conjunction with a SonicWALL SSL VPN or IPSec VPN solution to recover files, enforce consistent backup policies and control features available to end-users.
- **Agent Tool:** The SonicWALL CDP Agent Tool is installed on every laptop, PC or server that is connected to the CDP appliance. It provides configuration, status and monitoring, as well as file and disaster recovery for each device. End-users can recover file versions through a simple user interface.
- **Bare Metal Restore:** BMR protects servers, their operating systems, and applications such as Exchange, Active Directory, and SQL Server, as well as configuration settings and preferences such that a complete server or workstation can be quickly recovered in the case of disaster without having to reinstall each individual application separately.

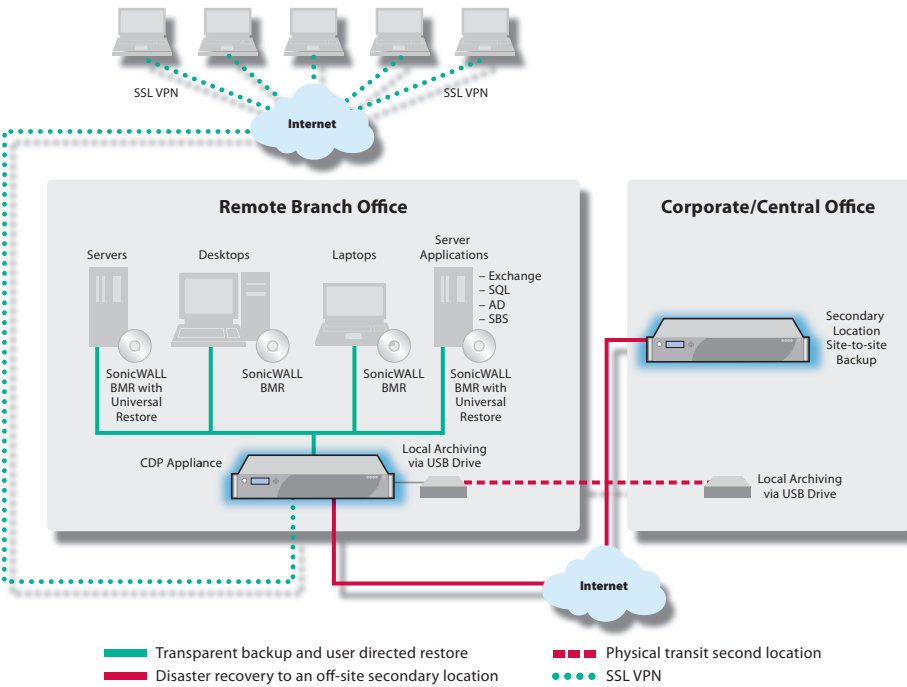
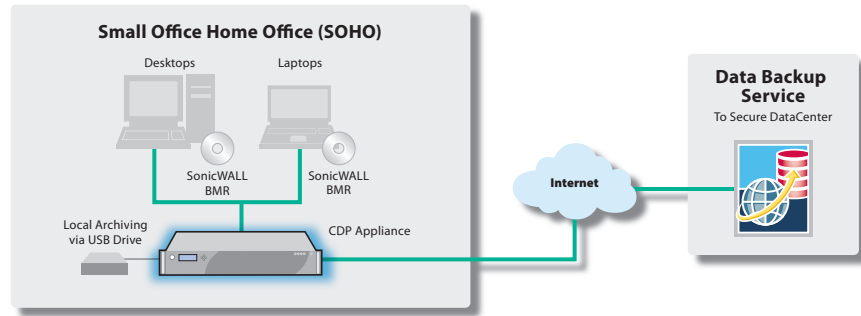
*“Storage services  
models for data  
backup, archiving  
and replication  
will be more  
appealing to  
businesses.”*

- IDC

## Sonicwall CDP Deployment Scenarios

### Small Office Home Office (SOHO)

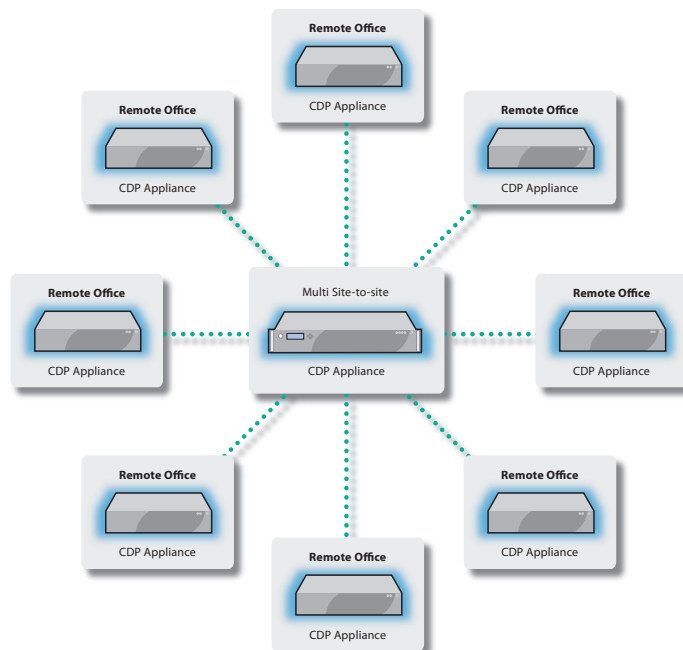
In this SOHO scenario, data on desktops and laptops is transparently backed up to the CDP appliance, which is then automatically backed up to the CDP Offsite Data Backup Service using SonicWALL's state-of-the-art Secure Data Center. Additionally, the latest version of backup data can be archived on a local USB drive for added disaster protection, and complete system images of all workstations can be written on a secondary external media for Bare Metal Recovery.



### Remote Office Branch Office (ROBO)

In this ROBO scenario, data and applications from workstations and servers at each remote office have been burned to CDs for Bare Metal Recovery. Data from workstations and servers is transparently and automatically transmitted to the local CDP appliance at headquarters. Mobile users' data is transparently and securely transmitted over SSL VPN to the branch office CDP appliance. The backup is then securely transmitted site-to-site to a secondary CDP appliance at the central office. Additionally, the latest version of backup data can be archived on a local USB drive for added disaster protection.

### Distributed Enterprises



### Distributed Environments

In this distributed environment scenario, a primary CDP appliance aggregates and centralizes backups from multiple site-to-site connections.

# Specifications



CDP 6080  
01-SSC-9304



CDP 5040  
01-SSC-9303



CDP 210  
01-SSC-9309



CDP 110  
01-SSC-9300

	CDP 110	CDP 210	CDP 5040	CDP 6080
<b>Recommended Configuration</b>				
Users (Recommended)	15	25	60	100
Servers (Recommended) <sup>1</sup>	5 <sup>1</sup>	5 <sup>1</sup>	10	15
<b>Operating System Support</b>				
Windows XP, XP Professional, Vista (x32 and x64)	Yes	Yes	Yes	Yes
Windows Server 2000, 2003, 2008 (x32 and x64)	Optional	Optional	Yes	Yes
Linux (Debian 3.1, Suse 10.1, Fedora Core 5, Redhat Enterprise Linux 3 (x32 only))	Optional	Optional	Yes	Yes
<b>Server Application Support</b>				
MS Exchange 2000, 2003, 2007	Optional	Optional	Yes	Yes
Mail-Box Level Restore for MS Exchange 2003, 2007	Optional	Optional	Yes	Yes
MS SQL Server 2000, 2005, 2008	Optional	Optional	Yes	Yes
Active Directory 2003, 2008	Optional	Optional	Yes	Yes
Auto-discovery of Database	Optional	Optional	Yes	Yes
<b>Client Application Support</b>				
MS Outlook 2003, 2007	Yes	Yes	Yes	Yes
Outlook Express	Yes	Yes	Yes	Yes
<b>Backup and Recovery</b>				
Continuous Data Protection (CDP)	Yes	Yes	Yes	Yes
Zero-downtime Automated Backup	Yes	Yes	Yes	Yes
Zero Impact Backup – Transparent and Hassel-free	Yes	Yes	Yes	Yes
Backup Windows Data and Applications in Virtual Environment	Yes	Yes	Yes	Yes
User Directed Recovery	Yes	Yes	Yes	Yes
File Versioning	Yes	Yes	Yes	Yes
Open File Backup	Yes	Yes	Yes	Yes
Compression	Yes	Yes	Yes	Yes
VSS Snapshot Service	Yes	Yes	Yes	Yes
<b>Disaster Recovery</b>				
Site-to-Site Backup (Data Mirroring)	Optional	Optional	Optional	Optional
Local Archiving	Yes	Yes	Yes	Yes
Online Backup (Offsite Datacenter)	Optional	Optional	Optional	Optional
Universal Restore for Bare Metal Recovery <sup>2</sup>	Optional <sup>2</sup>	Optional <sup>2</sup>	Optional <sup>2</sup>	Optional <sup>2</sup>
Bare Metal Recovery – Server License	Optional	Optional	1	2
Bare Metal Recovery – Workstation License	1	2	5	10
<b>Security</b>				
AES 256-bit Encryption	Yes	Yes	Yes	Yes
<b>Management and Administration</b>				
Central Administration	Yes	Yes	Yes	Yes
Backup Scheduling	Yes	Yes	Yes	Yes
Enforced Policy Based Backup	Yes	Yes	Yes	Yes
Bandwidth Throttling	Yes	Yes	Yes	Yes
Quota Setting	Yes	Yes	Yes	Yes
Reporting/Logging	Yes	Yes	Yes	Yes
Event Alerting	Yes	Yes	Yes	Yes
File Filters	Yes	Yes	Yes	Yes
Automated Firmware Update	Yes	Yes	Yes	Yes
<b>Appliance Characteristic</b>				
Form Factor	Desktop	Desktop	1U	2U
RAID Support	–	–	RAID 5	RAID 5
RAM included	512 MB	512 MB	2 GB	4 GB
Internal Drives included (number of drive bay)	1 standard	1 standard	4 standard	4 standard (8 max.)
Disk Drive Capacity, Type <sup>4</sup>	500 GB <sup>4</sup>	1 TB <sup>4</sup>	750 GB <sup>4</sup>	750 GB <sup>4</sup>
Total Capacity (With Expansion Disk Pack) <sup>3</sup>	500 GB	1 TB	3 TB	3 TB (6 TB max.) <sup>3</sup>
Total Useable Capacity (With Expansion Disk Pack) <sup>3</sup>	400 GB	860 GB	1.9 TB	1.9 TB (3.8 TB max.) <sup>3</sup>
Total Useable Capacity (Typical 2:1 Compression) <sup>3</sup>	800 GB	1.7 TB	3.8 TB	3.8 TB (7.6 TB max.) <sup>3</sup>
Network Interface	100BaseT	100BaseT	1 GbE	1 GbE
<b>Technical Specifications</b>				
Depth	10.75 in (27.3 cm)	10.75 in (27.3 cm)	21.25 in (54.0 cm)	27.25 in (69.9 cm)
Weight	6.6 lbs (3 kg) –not including AC/DC	6.6 lbs (3 kg) –not including AC/DC	26.75 lbs (12.1 kg)	50 lbs (22.7 kg) – Fully populated
<b>Support and Warranty</b>				
Support and Warranty	1-year Standard HW Support with 90-day Dynamic Support			

<sup>1</sup> Requires purchase of "SonicWALL CDP 110/210 5 Server Applications License" upgrade –01-SSC-9306

<sup>2</sup> Universal Restore is an add on optional license to the Bare Metal Recovery – Server License that enables full server image recovery on to dissimilar hardware regardless of make, model or installed components.

<sup>3</sup> Requires purchase of "SonicWALL CDP 6080 4 Disk Pack Upgrade Kit" – 01-SSC-9307.

<sup>4</sup> SonicWALL will overtime increase the capacity of shipping units depending on hard drive availability.

For more information on SonicWALL backup and recovery solutions, please visit [www.sonicwall.com](http://www.sonicwall.com).

## SonicWALL, Inc.

2001 Logic Drive, San Jose, CA 95124  
T +1 408.745.9600 F +1 408.745.9300  
[www.sonicwall.com](http://www.sonicwall.com)

**SonicWALL's line-up of comprehensive protection**

**NETWORK SECURITY**

**SECURE REMOTE ACCESS**

**WEB AND E-MAIL SECURITY**

**BACKUP AND RECOVERY**

**POLICY AND MANAGEMENT**

